



# HP WallArt Suite

## JDF Workflow Integration

December 2015

HP WallArt Team



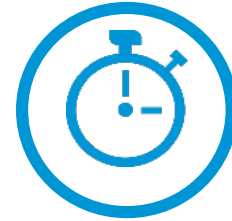
# Enabling JDF in HP WallArt Basic Concept

# JDF/RIP's Automation

## More efficiency on your workflow

How can it accelerate the process?

- 1 Sends ready-to-print files directly from your web2print
- 2 RIP automatically downloads your files, without manual interaction



## AUTOMATIC PROCESS



HP WallArt Web2Print



File Ripping



Printing

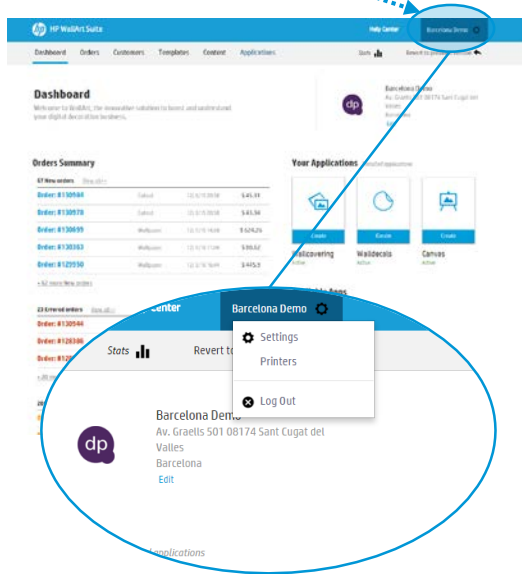


# Enabling JDF in HP WallArt

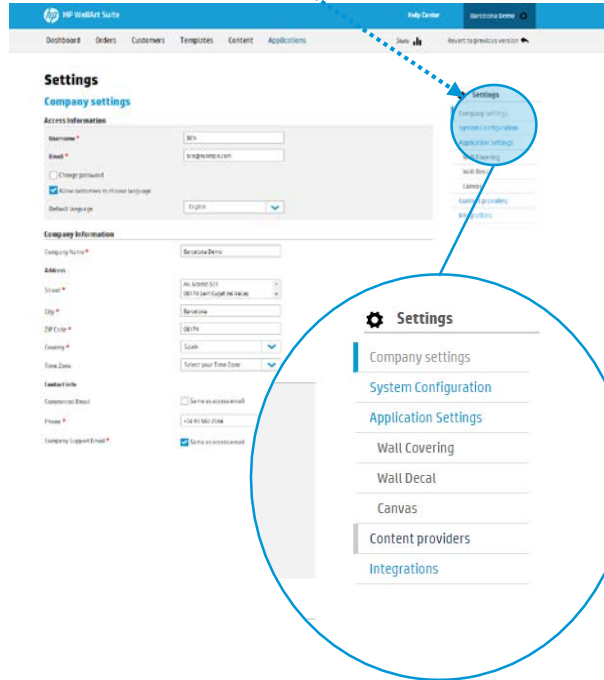
## How it works

# Enter Workflow Integration settings

1 Click on  Settings

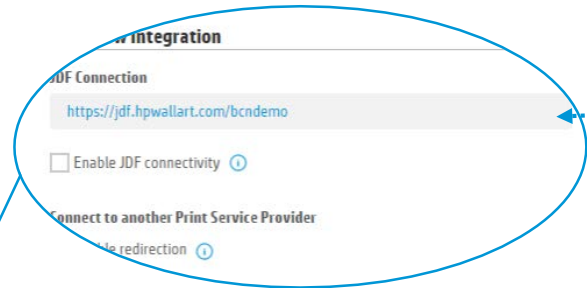


2 Click on [System Configuration](#)



# Configure JDF Connection settings

3 Scroll down to Workflow Integration. There you will find the JDF Integration options.



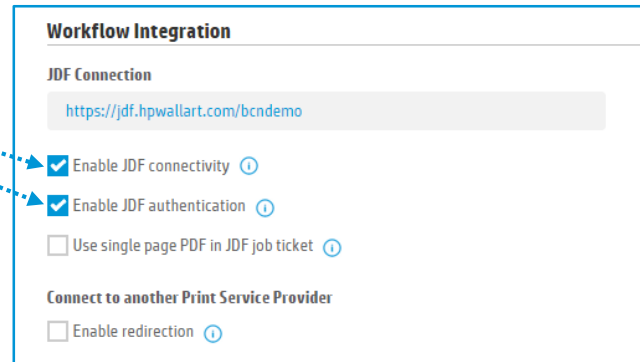
Note this personalized URL. You will need it in further steps to configure your RIP.



# Configure JDF Connection settings

- 4 Click to check the “Enable JDF connectivity”, and ensure that “Enable JDF authentication” is also checked.

Configure any additional options, if needed.



**Workflow Integration**

**JDF Connection**

<https://jdf.hpwallart.com/bcndemo>

Enable JDF connectivity ⓘ

Enable JDF authentication ⓘ

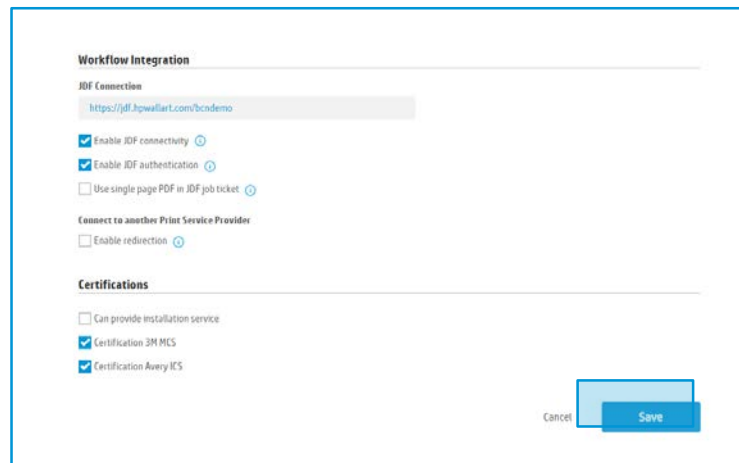
Use single page PDF in JDF job ticket ⓘ

**Connect to another Print Service Provider**

Enable redirection ⓘ

# Configure JDF Connection settings

- 5 Remember to save any changes clicking the [Save](#) button.



The screenshot shows a configuration page for JDF Connection. It is divided into three sections: Workflow Integration, Connect to another Print Service Provider, and Certifications. In the Workflow Integration section, the JDF Connection URL is set to https://jdf.hpwallart.com/bcddemo. The 'Enable JDF connectivity' and 'Enable JDF authentication' checkboxes are checked, while 'Use single page PDF in JDF job ticket' is unchecked. In the Connect to another Print Service Provider section, the 'Enable redirection' checkbox is unchecked. In the Certifications section, 'Can provide installation service' is unchecked, while 'Certification 3M MCL' and 'Certification Avery ICS' are checked. At the bottom right, there are 'Cancel' and 'Save' buttons.

**Workflow Integration**

JDF Connection

https://jdf.hpwallart.com/bcddemo

Enable JDF connectivity

Enable JDF authentication

Use single page PDF in JDF job ticket

**Connect to another Print Service Provider**

Enable redirection

**Certifications**

Can provide installation service

Certification 3M MCL

Certification Avery ICS

Cancel Save

In the next steps, you will setup your RIP.





# HP WallArt Set up in



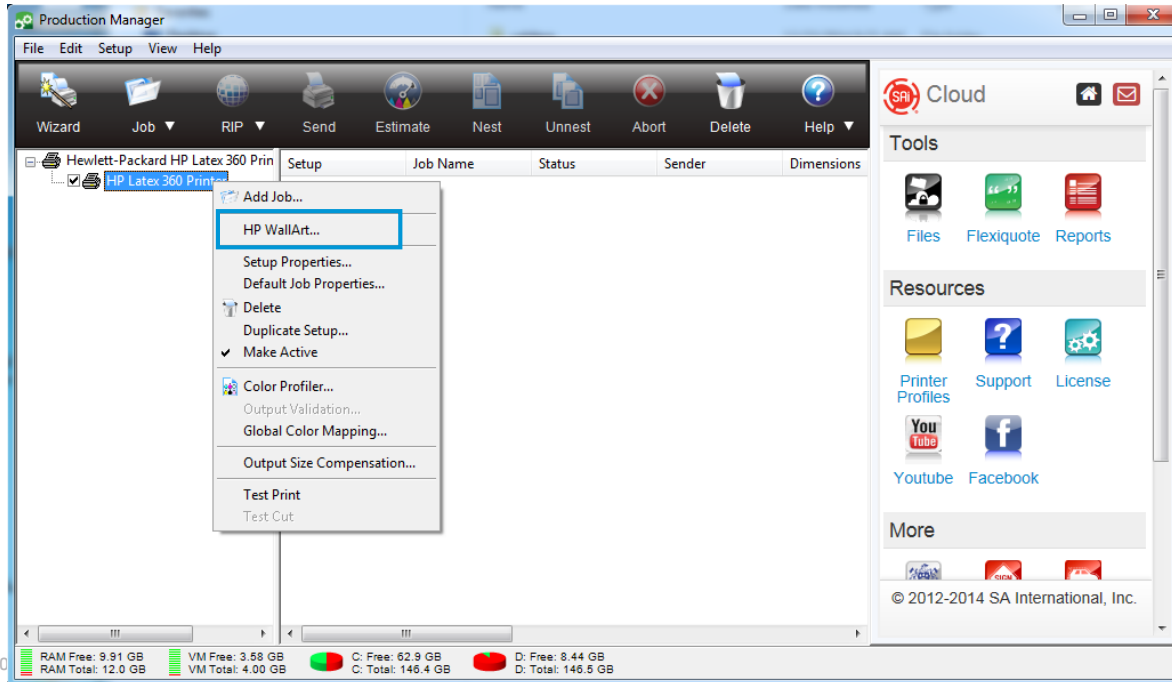
For SAI Flexi print HP Basic and Premium edition

# Set up HP Wallart Suite in SAi RIP



Only for SAiFlexi Print HP Basic and Premium Edition and HP FlexiSIGN PRO

1 Open RIP application, select your HP printer and click & select HP WallArt option:

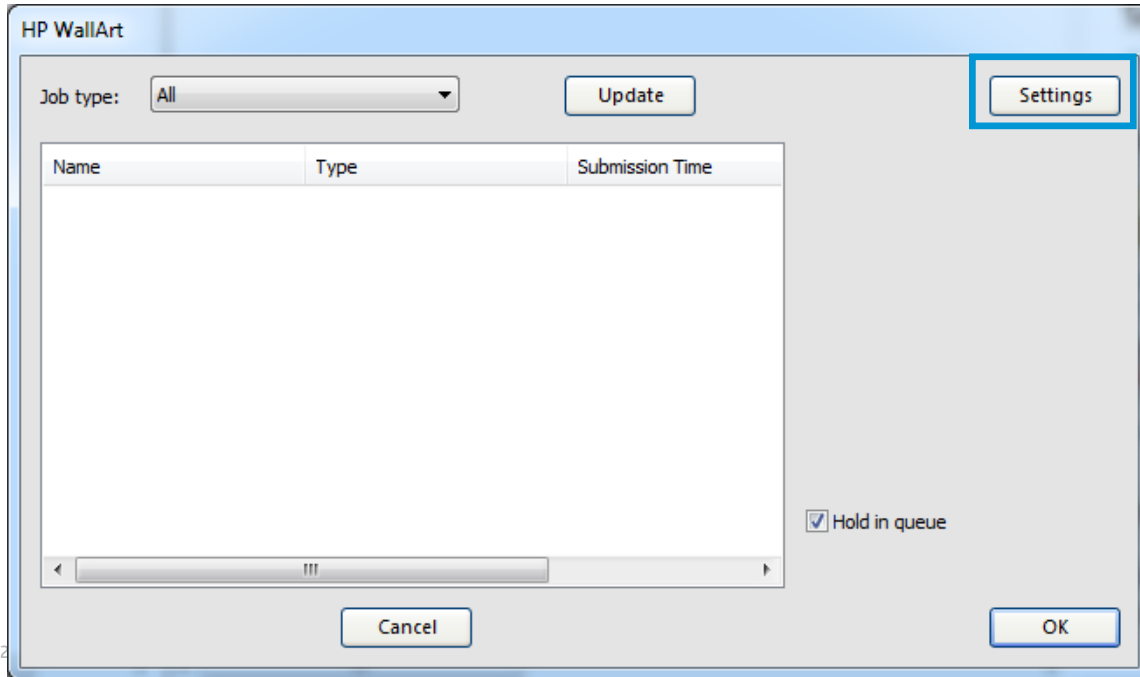


# Set up HP Wallart in SAi RIP



Only for SAiFlexi Print HP Basic and Premium Edition and HP FlexiSIGN PRO

2 The HP WallArt will be displayed. Click on Settings button to configure HP WallArt



# Set up HP Wallart in SAi RIP



Only for SAiFlexi Print HP Basic and Premium Edition and HP FlexiSIGN PRO

3 Type in HP WallArt settings & click on OK tab

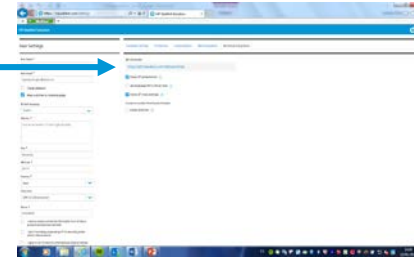
HP WallArt setting

HP WallArt URL:

HP WallArt User:

HP WallArt Password:

Cancel OK

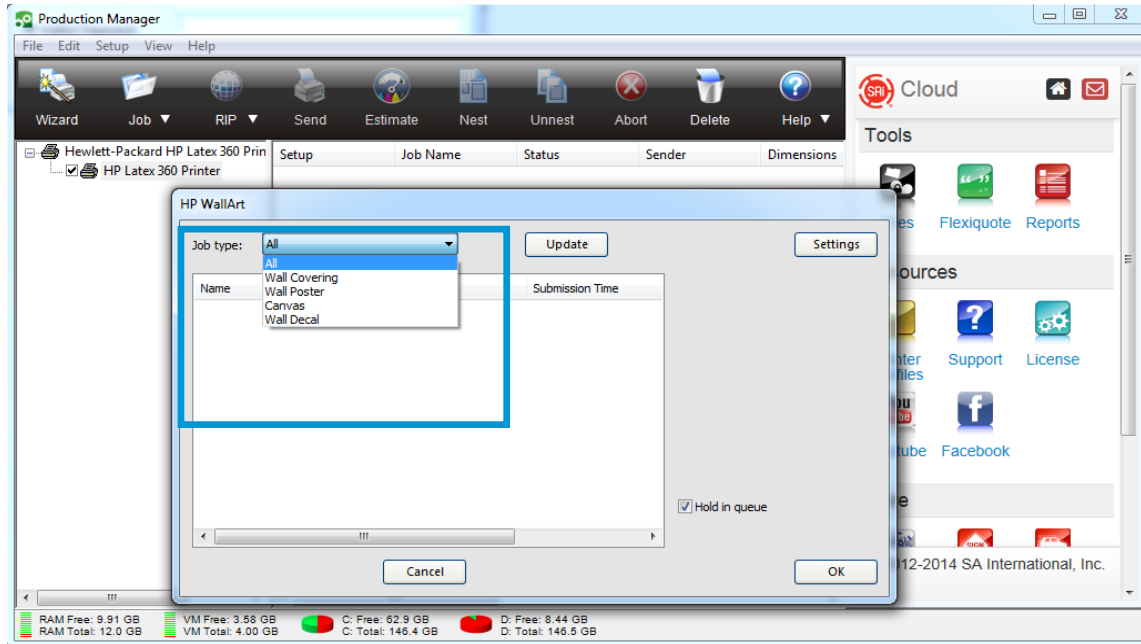


# Set up HP Wallart in SAi RIP



Only for SAiFlexi Print HP Basic and Premium Edition and HP FlexiSIGN PRO

4 HP WallArt window will display the available jobs in HP WallArt

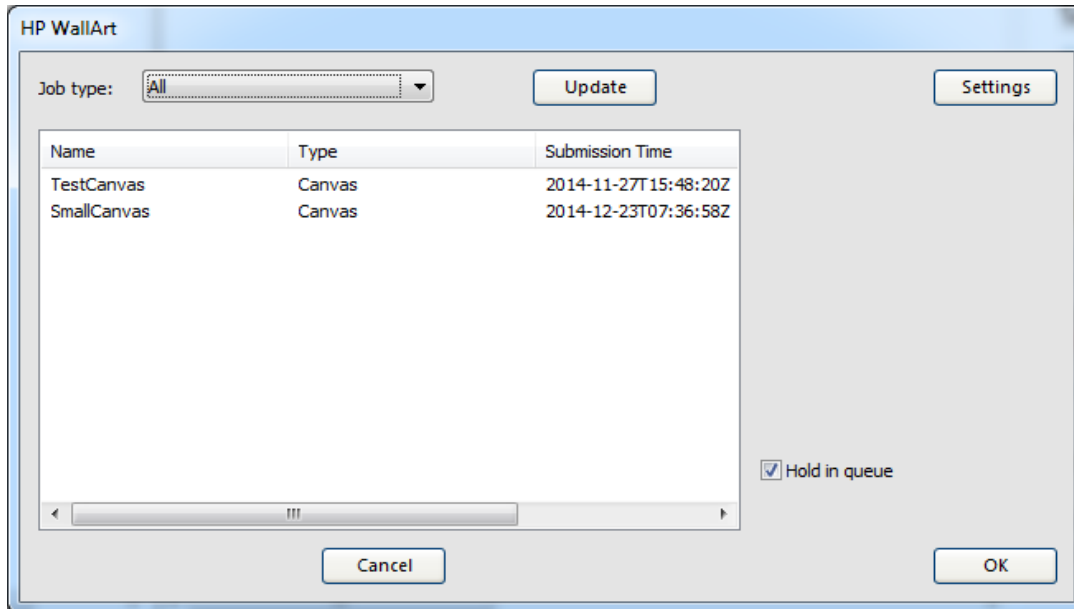


# Set up HP Wallart in SAi RIP



Only for SAiFlexi Print HP Basic and Premium Edition and HP FlexiSIGN PRO

4 It can be filtered by type

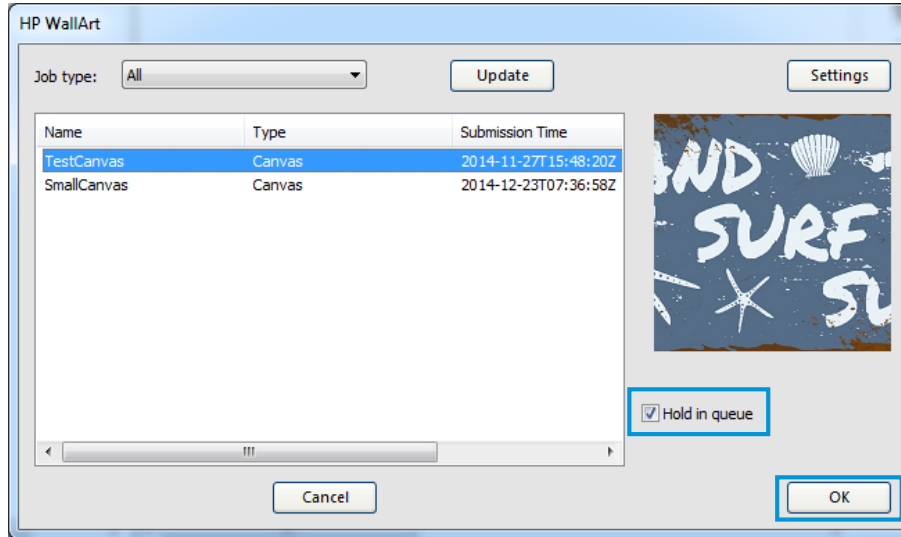


# Set up HP Wallart in SAi RIP



Only for SAiFlexi Print HP Basic and Premium Edition and HP FlexiSIGN PRO

- 5 Select the jobs to be downloaded to the RIP printer queue and click OK  
In case you want to hold the jobs on the queue, select “Hold in queue option”.

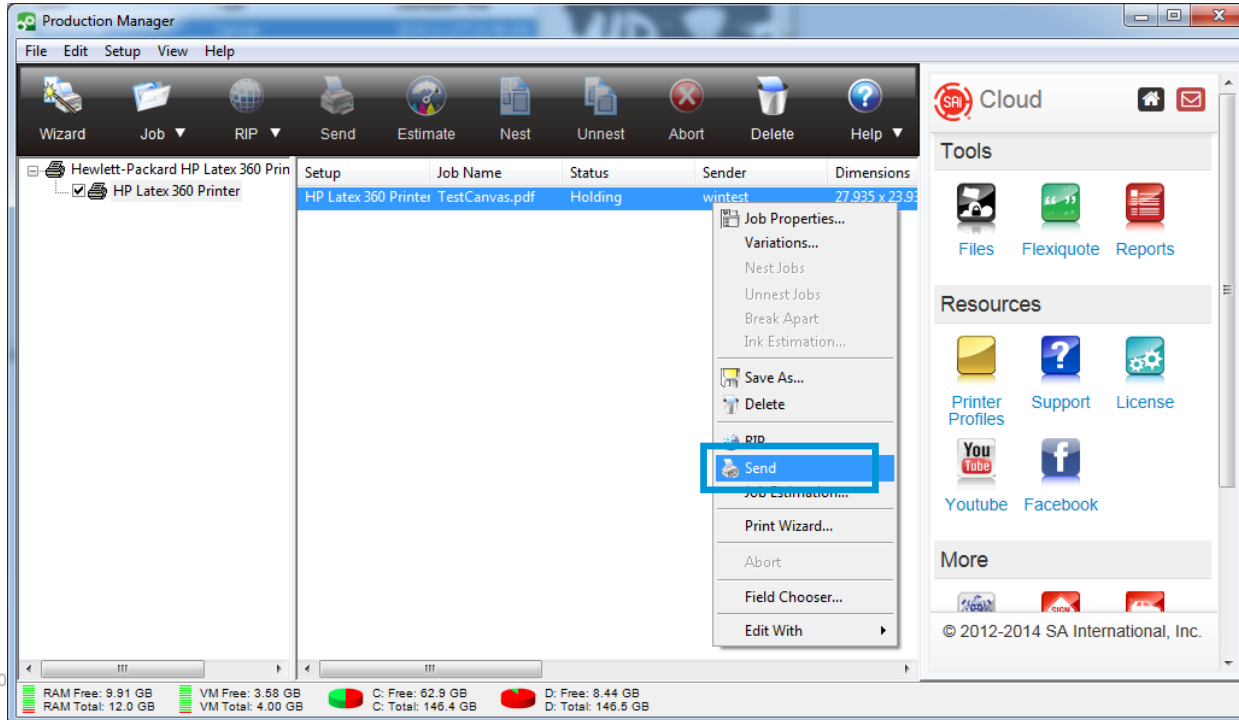


# Set up HP Wallart in SAi RIP



Only for SAiFlexi Print HP Basic and Premium Edition and HP FlexiSIGN PRO

6 Once in the RIP queue, it is ready to be processed and printed from the RIP.





# Thank you

