



HP WallArt Suite

JDF Workflow Integration

December 2015

HP WallArt Team



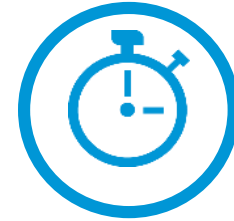
Enabling JDF in HP WallArt Basic Concept

JDF/RIP's Automation

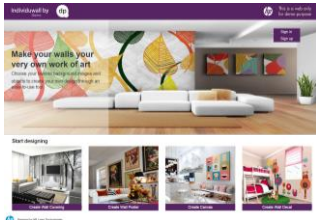
More efficiency on your workflow

How can it accelerate the process?

- 1 Sends ready-to-print files directly from your web2print
- 2 RIP automatically downloads your files, without manual interaction



AUTOMATIC PROCESS



HP WallArt Web2Print



File Ripping



Printing



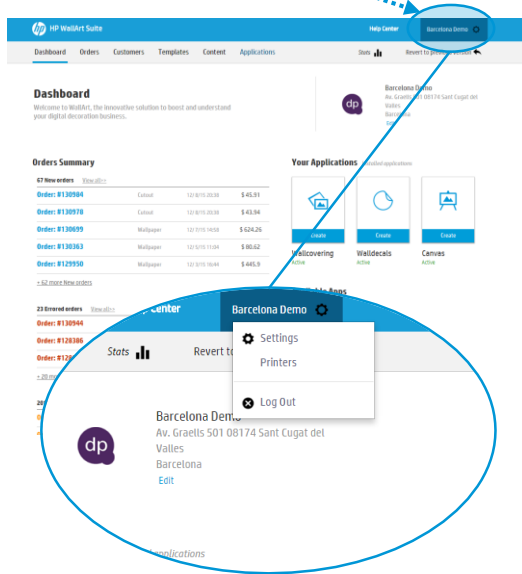


Enabling JDF in HP WallArt

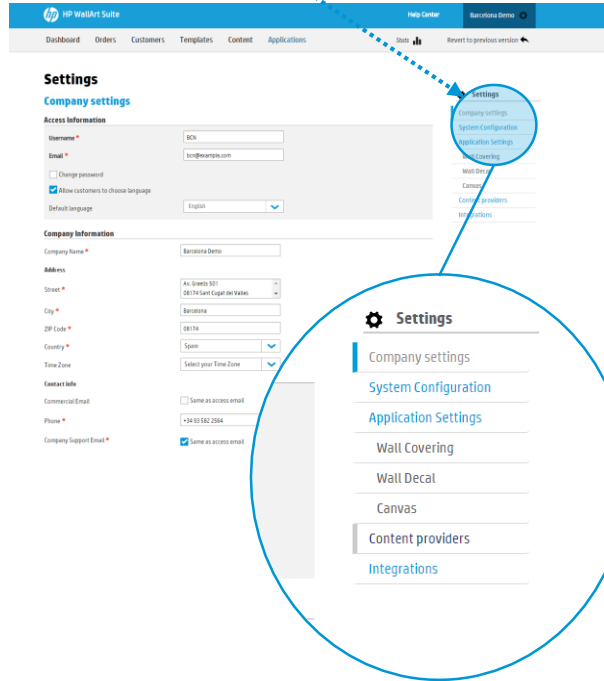
How it works

Enter Workflow Integration settings

1 Click on  Settings

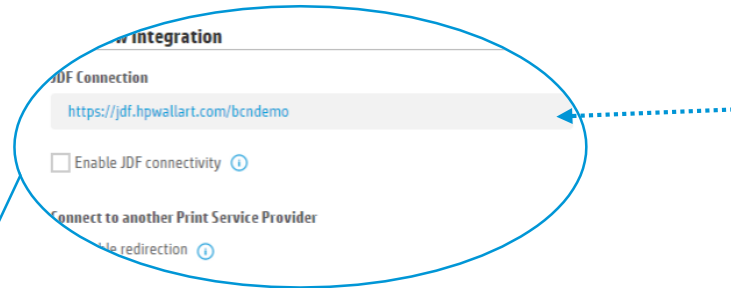


2 Click on [System Configuration](#)



Configure JDF Connection settings

3 Scroll down to Workflow Integration. There you will find the JDF Integration options.



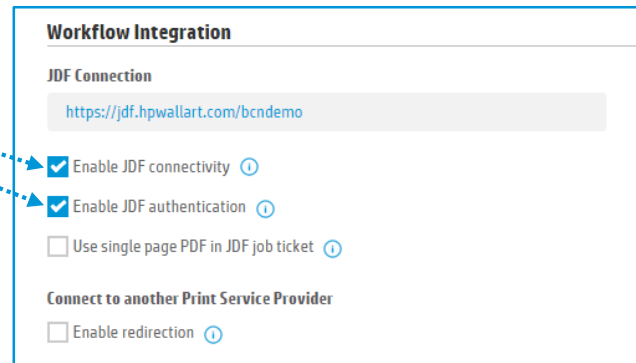
Note this personalized URL. You will need it in further steps to configure your RIP.



Configure JDF Connection settings

- 4 Click to check the “Enable JDF connectivity”, and ensure that “Enable JDF authentication” is also checked.

Configure any additional options, if needed.



Workflow Integration

JDF Connection

<https://jdf.hpwallart.com/bcndemo>

Enable JDF connectivity ⓘ

Enable JDF authentication ⓘ

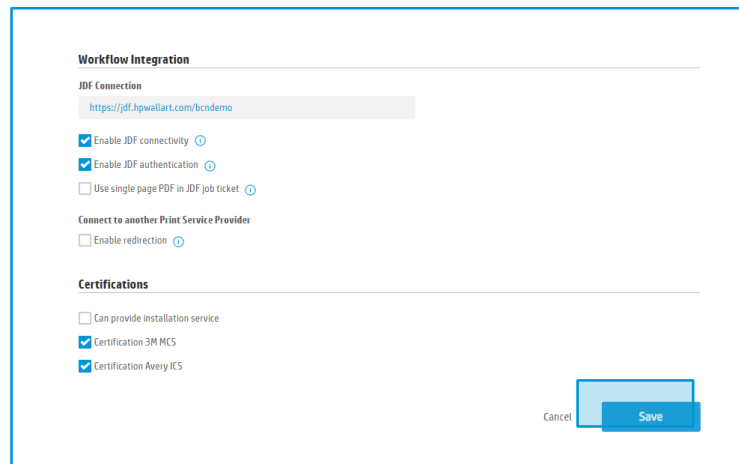
Use single page PDF in JDF job ticket ⓘ

Connect to another Print Service Provider

Enable redirection ⓘ

Configure JDF Connection settings

- 5 Remember to save any changes clicking the [Save](#) button.



The screenshot shows a configuration window titled "Workflow Integration". Under the "JDF Connection" section, there is a text input field containing the URL "https://jdf.hpwallart.com/bcadmino". Below this are three checkboxes: "Enable JDF connectivity" (checked), "Enable JDF authentication" (checked), and "Use single page PDF in JDF job ticket" (unchecked). The "Connect to another Print Service Provider" section has one checkbox, "Enable redirection" (unchecked). The "Certifications" section has three checkboxes: "Can provide installation service" (unchecked), "Certification 3M MCS" (checked), and "Certification Avery ICS" (checked). At the bottom right, there are two buttons: "Cancel" and "Save".

In the next steps, you will setup your RIP.



HP WallArt Set up in



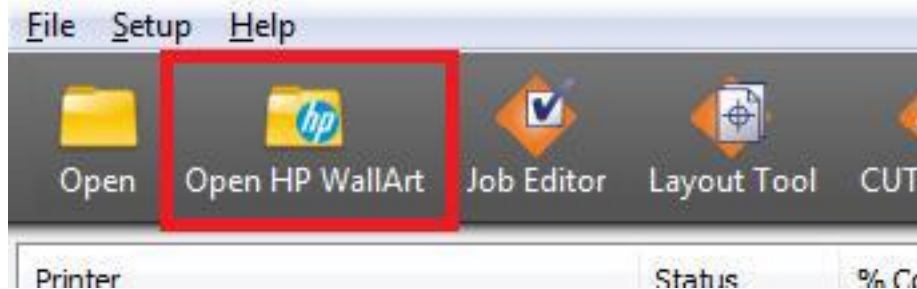
Adding HP WallArt permissions in ONYX

- HP WallArt is a licensed feature in ONYX software
- Available for ONYX Thrive, ProductionHouse, PosterShop and RIPCenter products
- Included in select HP versions of ONYX products*
- Available at no-cost as a benefit for existing ONYX Advantage contract holders
- Requires Version 11.1.2 or higher
- Requires an SRM key upgrade for existing customers
- ONYX part number: OP-HPWALLART
- List price \$495.00 (US)

*Contact local ONYX Resellers for product availability

Using HP WallArt in ONYX

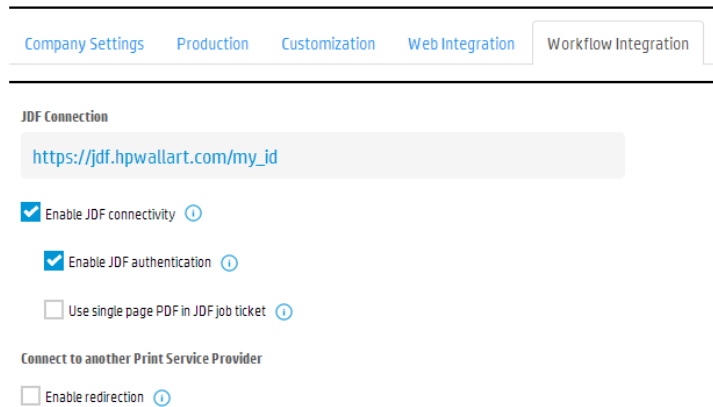
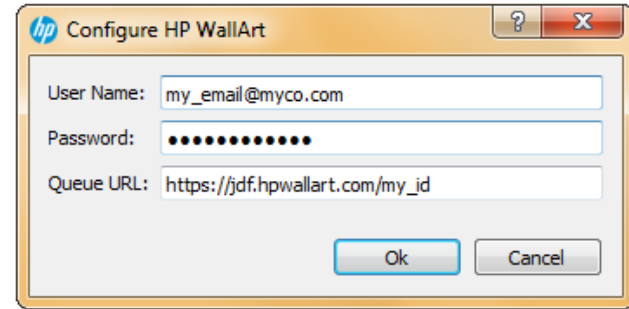
- 1 Once the user has a WallArt-enabled key, a new "Open HP WallArt" button will appear in the toolbar of ONYX RIP-Queue and Job Editor.



Using HP WallArt in ONYX

- 2 - The configuration dialog will be displayed when first selecting the "Open HP WallArt" button. It can also be opened by clicking the Configure button on the main dialog.
 - User Name and Password are the same as is used to log in to the WallArt website.
 - Queue URL is shown as the JDF Link on the Workflow Integration tab of the settings on the HP WallArt website.

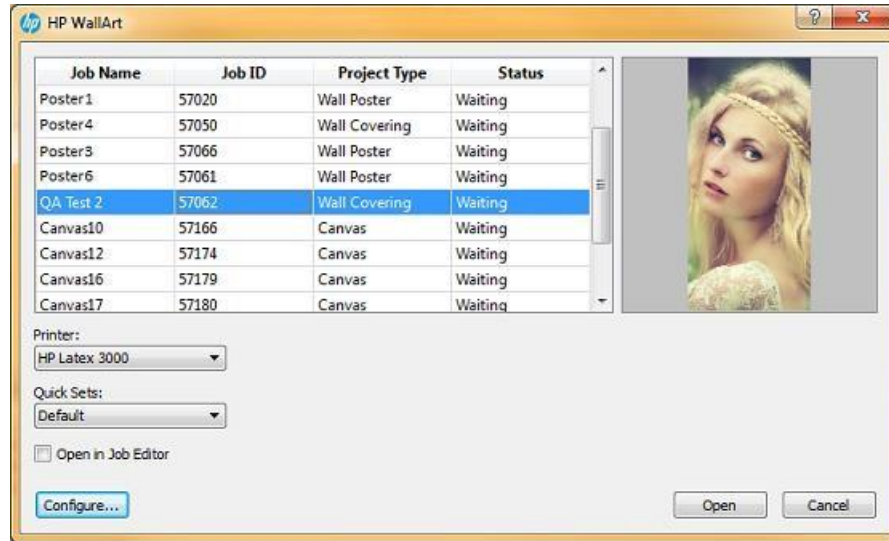
*NOTE: JDF authentication can be turned on in the HP WallArt application under the Workflow Integration tab. The User Name and Password are required for authentication.



Using HP WallArt in ONYX



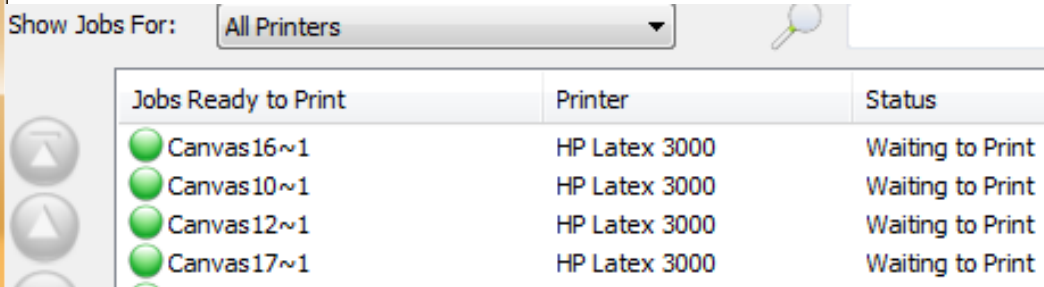
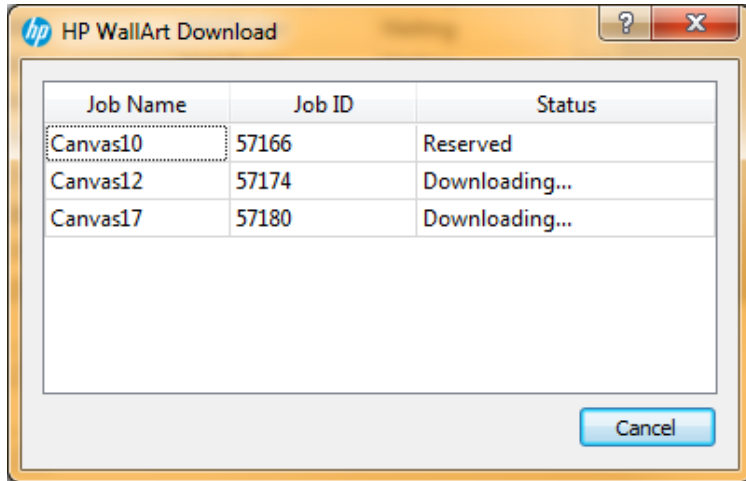
- 3 - When the user has entered the information, the main dialog will populate with the current list of waiting jobs. One or more jobs can be selected from the list. If a single job is selected, a preview of the job will be displayed.
- The user will select any HP WallArt compatible printer installed in ONYX and available in Rip-Queue.
 - The user can choose a Quick Set and enable opening the job(s) in Job Editor.



Using HP WallArt in ONYX

4 - When Open is clicked, a download dialog opens and the selected jobs are reserved on the server and the JDF files are downloaded. When all of the jobs have a status of Finished, the dialog may be closed. If they are not Finished, closing the dialog may interrupt a download.


- The JDF files will be handled by Rip-Queue and soon the new jobs will appear in the queue. It may be a few seconds before a job is seen in the queue.



Using HP WallArt in ONYX

- 5 - A job that has been downloaded and is ready to process and print will appear on the HP WallArt website in a Running state.
- A job that finishes printing in the queue will be in the Completed state.
 - If a job is deleted before completion, it should return to the Waiting state.

Order: #58603 (Copied from #58598)

	<p>Created: 11/20/2014 23:25 UTC</p> <p>Ordered: 11/21/2014 16:00 UTC</p> <p>RIP: 11/25/2014 20:07 UTC</p> <p>(Running)</p> <p>Days before expiration: 6</p>	<p>Name: Canvas10</p> <p>Type: Canvas</p> <p>Size: 19.145 x 15.9389 in</p> <p>Area: 2.12 sqft</p> <p>Customer: --</p> <p>Origin: Web</p> <p>Tags: Add tags...</p>
---	---	---

Job ID: #57166

Using HP WallArt in ONYX

6

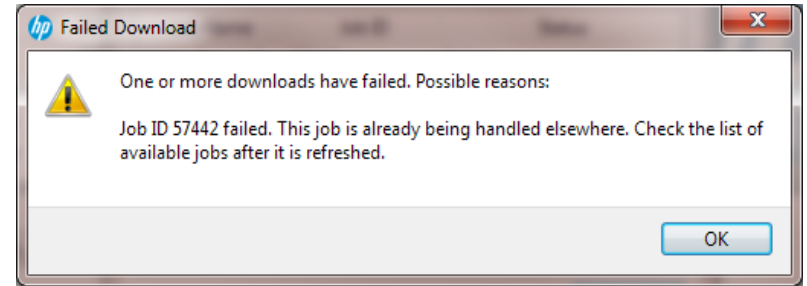
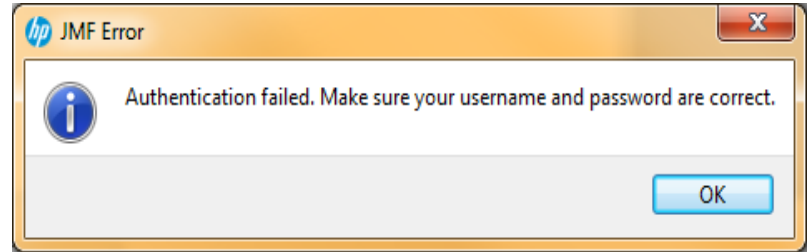
Potential error messages:

- If JDF authentication is enabled on the WallArt server, the user name and password are required in the configuration dialog to successfully connect with the server.

An error in the user name or password will result in an authentication error message.

- If there is a failure when trying to get a job from the server, there should be a message that tells the user why it may have failed.

- If the Queue URL is invalid, then an error will display saying it is invalid.



Thank you

